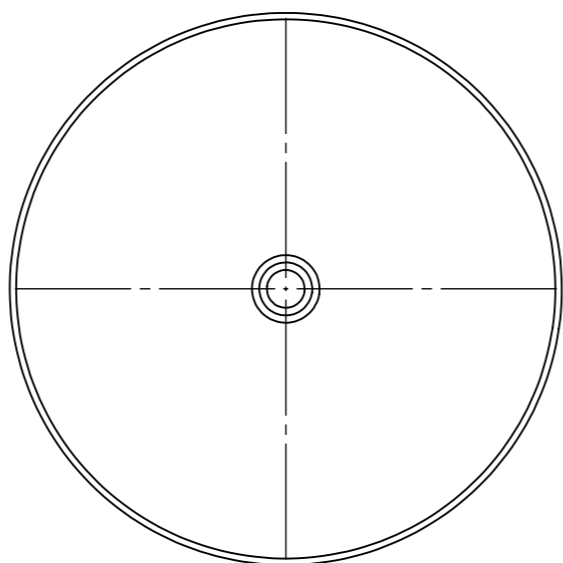
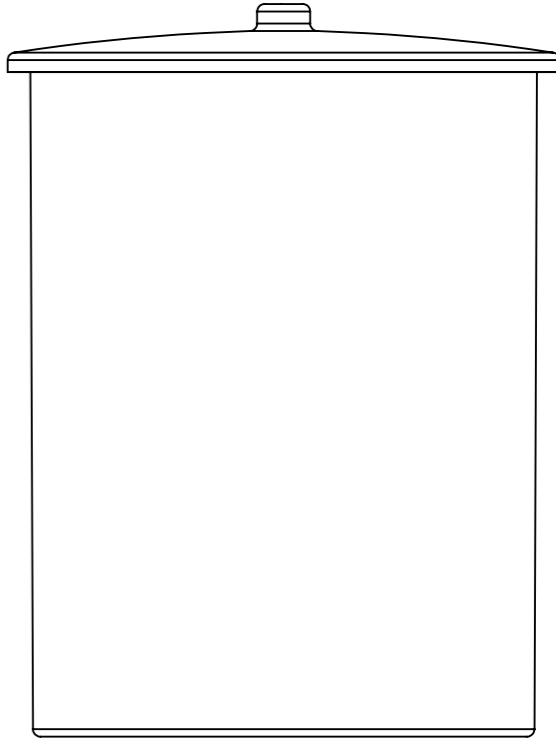
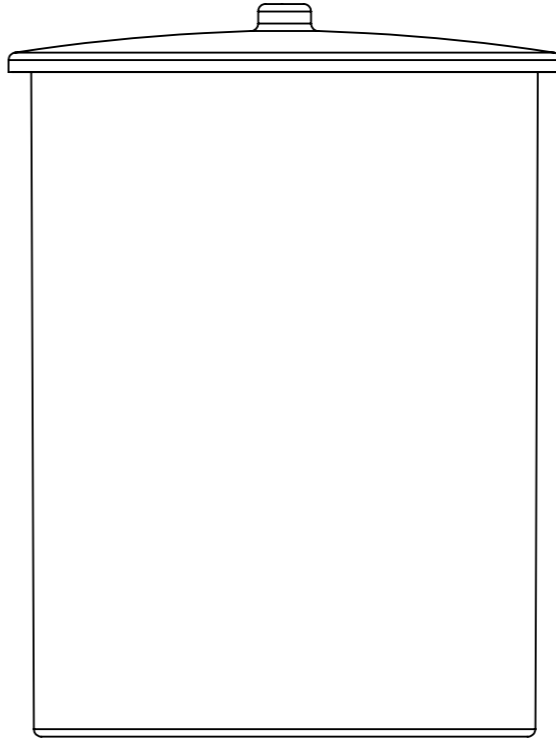
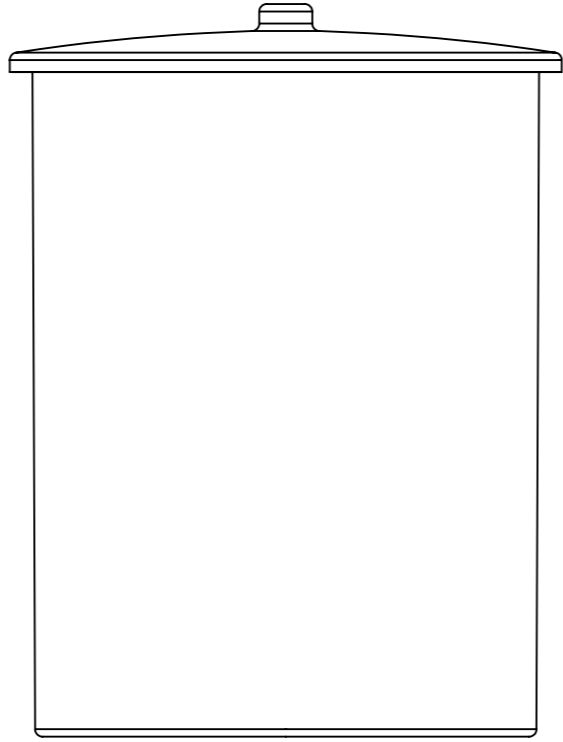
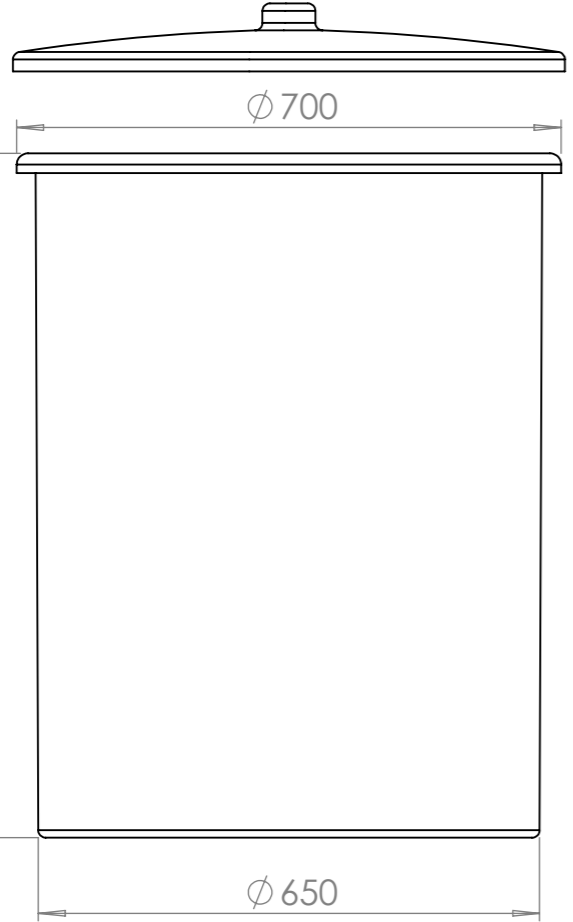
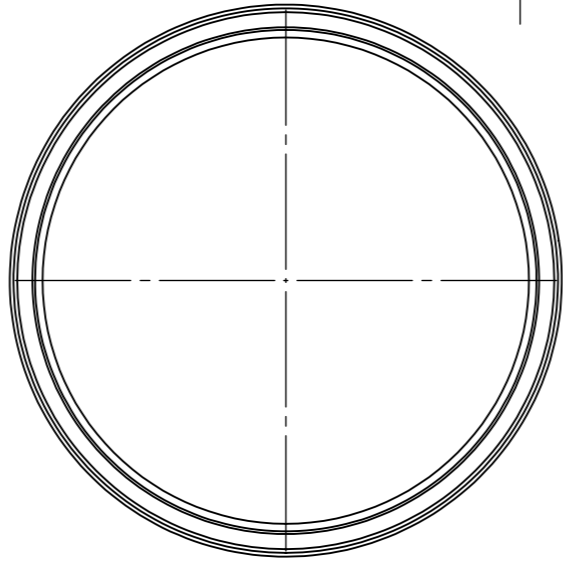


1 2 3 4 5 6 7 8

A
B
C
D
E
F

| REVISIONS | | | | |
|-----------|------|---------------------|------------|----------|
| ZONE | REV. | DESCRIPTION | DATE | APPROVED |
| | A | Changed to all view | 17.09.2020 | GEP |



| | | | | | |
|--|---|--------|---------|----------|------|
| Generelle toleranser om ikke annet er oppgitt på tegning | Tilatte avvik for måleområde. Gjelder ved +20°C | | | | |
| General tolerances if not other stated on drawing | Permissible deviations for basic length size range. Valid +20°C | | | | |
| | 0-20 | >20-75 | >75-150 | >150-300 | >300 |
| | ±0,5mm | ±1mm | ±1,5mm | ±1,3% | ±1% |

| | | | | | | |
|-----------------------|--------------|--------------------|--------------------|------------|-------|-------|
| Constructed by - date | Evaluated by | Approved by - date | General Tolerances | Finish, Ra | View | Scale |
| GEP 02.10.2017 | | | NS-ISO 2768-1 | LDPE | | 1:10 |
| Owner | | | Titel/Description | | | |
| | | | 10280 CPX 280L syl | | | |
| Drawing number | | | Revision | Sheet size | Sheet | |
| 1235 - 312 | | | A | A3 | 1(1) | |

1 2 3 4 5 6 7 8